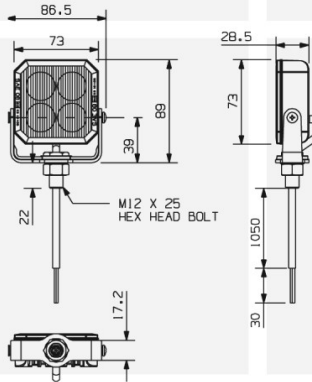


LED Warning Lamps

L73 LED WARNING LAMP

Lens uncoloured.
L73.00.LDV amber.



- 5 FLASH PATTERNS INCLUDING 'STEADY' BURN
- SINGLE / MULTI UNIT SYNCHRONISATION
- 12V OR 14V OPERATION
- CURRENT 0.55A@12V 0.26A@24V
- COMPLIES WITH: ECE DIRECTIVE 2009/19/EC FOR ELECTROMAGNETIC COMPATABILITY

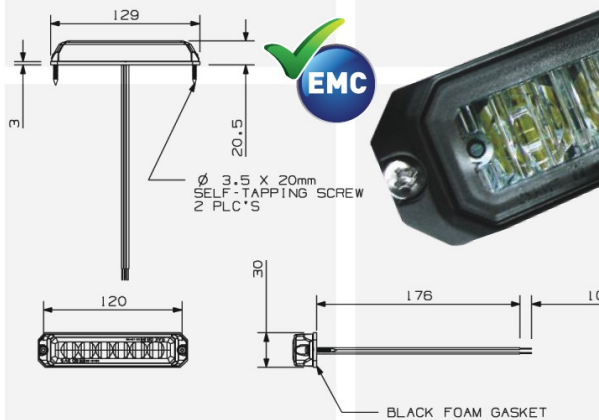


L76 MINI 'SLIM-LINE' LAMP

Lens uncoloured.
L76.00.LDV amber.



- 19 SELECTABLE FLASH PATTERNS
- SUPER SLIM DESIGN FOR VARIOUS MOUNTING OPTIONS
- SINGLE / MULTI UNIT SYNCHRONISATION
- 12V OR 24V OPERATION
- CURRENT 0.55A@ 12V, 0.26A@24V
- LAMP COMPLIES WITH EEC DIRECTIVE 2009/19/EC FOR ELECTROMAGNETIC COMPATABILITY



Our LED warning lamp range is constantly updated. Please contact our sales team regularly for the latest information.
Call: +44(0)1262 670161

Britax

BRITAX PMG LTD

Bessingby Industrial Estate
Bridlington, East Yorkshire,
YO16 4SJ, England

T +44 (0) 1262 670161
F +44 (0) 1262 605666

E info@britax-pmg.com
W www.britax-pmg.com

Contact your local Britax distributor:

THE BRITAX RANGE ALSO INCLUDES:

- WINDSCREEN WIPER BLADES
- 12VOLT & 24VOLT PLUGS AND SOCKETS
- JUNCTION BOXES
- REVERSE ALARMS
- BATTERY MASTER SWITCHES
- BRITAX PMG LIMITED ARE MAIN AGENTS FOR VALEO (SWF) ROCKER SWITCHES AND STEERING COLUMN MULTI-FUNCTION LEVERS.

A member of the Public Safety Equipment (PSE) group of companies.